



St. Clair College Wireless Overview

St. Clair College hosts several wireless networks to support students, faculty and staff.

These services are based on a secure reliable platform using WPA/2 enterprise encryption with 802.1X authentication.

Please be aware devices that use WPA personal encryption will not work on this network, including some wireless printers, gaming consoles, etc.

STUDENT WIRELESS NETWORKS

SCCSTUDENT5G (Student wireless network 5GHz network)

- If faster speeds and a more reliable connection are most important to you, 5GHz is usually a better choice than 2.4 GHz.
- The 5GHz band is less likely to be congested, and offer much higher data transfer speeds.
- For Wi-Fi dense areas like the residences we recommend the use of this network.
- We recommend that Apple devices connect to this network.

SCCSTUDENT (Student wireless network 2.4GHz/5GHz network)

Most devices have the capability of using 2.4GHz & 5GHz and might default to 5GHz using this network, unless you have the ability to change the settings.

- If wireless range is more important to you, 2.4 GHz is usually a better choice than 5 GHz.
- If you have a lot of devices nearby that use 2.4 GHz and you are experiencing intermittent connectivity issues or dropped wireless connection then 5 GHz is probably a better option.
- If you have an older device that doesn't support 5GHz then 2.4GHz is to be used.

STAFF WIRELESS NETWORKS

StaffBYOD (Staff wireless network 2.4GHz/5GHz for personal devices)

- Use this network if you're a current staff member requiring Internet access for your personal devices, such as phones and tablets.
- This network does not connect to any internal resources and only connects to the Internet.

ScCSTAFF (Staff wireless network 2.4GHz/5GHz for College owned devices)

- Only for use with College owned Equipment.
- Cell Phones should not use this SSID

Device Specific Connection Details for Common Devices

Android Devices

Each version of Android has a different interface. You should find all the information required to connect in the following list.

Select the appropriate Wi-Fi network (**SCCSTUDENT/SCCSTUDENT5G/StaffBYOD**) based on your needs.

Use the following settings;

EAP Method = PEAP

Phase 2 Authentication = None

CA Certificate = DON'T VALIDATE

Identity = St.Clair ONE username

Anonymous Identity = empty, leave blank

Password = St.Clair ONE password

iOSs (Apple Devices)

Select the appropriate Wi-Fi network (SCCSTUDENT/SCCSTUDENT5G/StaffBYOD) based on your needs.

Enter your St. Clair ONE *username* and *password* into the Username and Password fields.

Tap JOIN

TAP Trust the SSL certificate – wifisponsor1.stclaircollege.ca

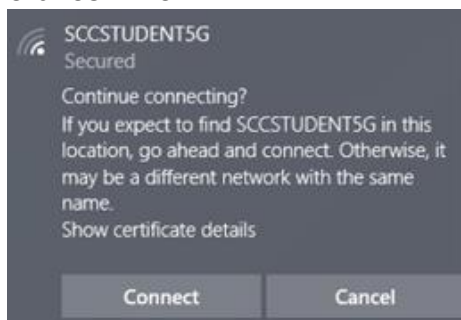
Windows (8 and 10)

Select the appropriate Wi-Fi network (SCCSTUDENT/SCCSTUDENT5G/StaffBYOD) based on your needs. *(If you want to connect automatically within range of the selected network make sure Connect automatically is checked)*

Enter your St. Clair ONE *username* and *password* into the User name and Password fields and proceed.

You may be prompted to CONTINUE CONNECTING

Click CONNECT



ChromeBook

Select the appropriate Wi-Fi SSID (**SCCSTUDENT/SCCSTUDENT5G/StaffBYOD**) based on your needs.

Use the following settings;

Security = EAP

EAP Method = PEAP

EAP Phase 2 authentication = Automatic

Server CA Certificate = DO NOT CHECK

Identity = St.Clair ONE username

Password = St.Clair ONE password

Anonymous Identity = empty, leave blank

Save Identity and Password = Turn ON

Allow other users of this device to use this network = Turn Off

Click CONNECT

PIXEL Cell Phones (Not all Pixel models work with these settings.)

Select the appropriate Wi-Fi SSID (**SCCSTUDENT/SCCSTUDENT5G/StaffBYOD**) based on your needs.

Use the Following settings

Security - EAP

EAP Method = PEAP

Phase 2 Authentication = MSCHAPV2

CA Certificate = Use system certificates

Domain = stclaircollege.ca

Identity = St.Clair ONE username

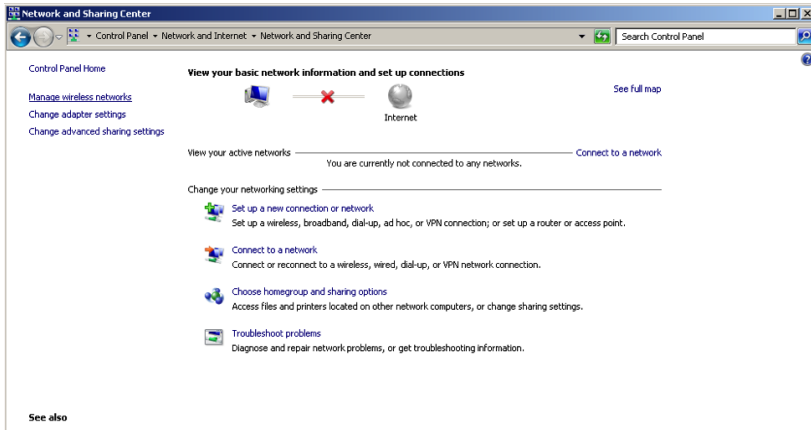
Anonymous Identity = empty, leave blank

Password = St.Clair ONE password

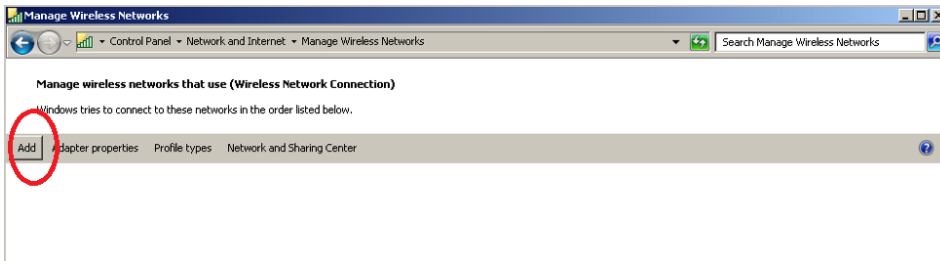
Windows 7

Click Start > Control Panel > Network and Sharing Center

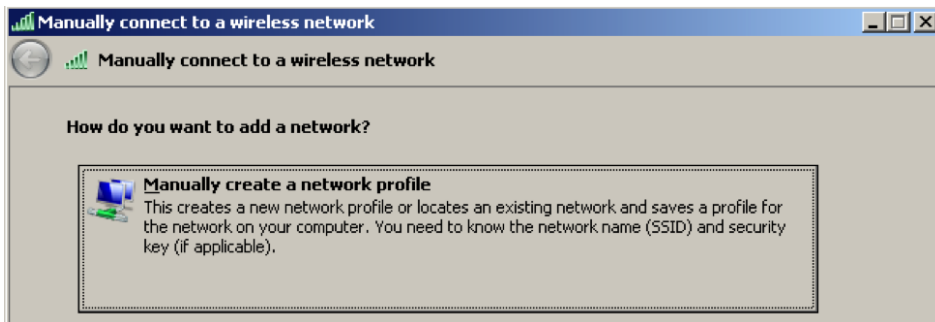
Click Manage wireless networks from the menu on the left



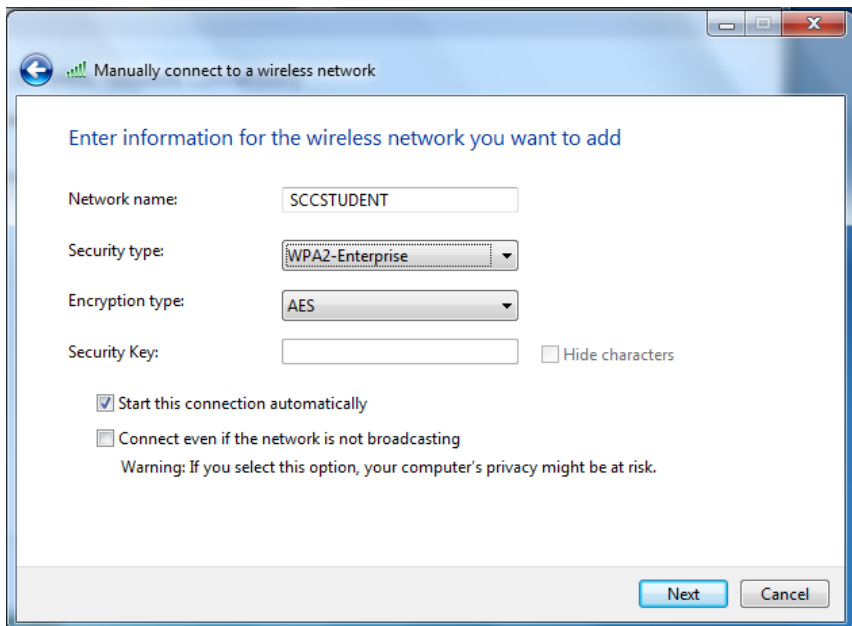
In the "Manage Wireless Networks" window click Add



Click Manually create a network profile



Complete the information in the form

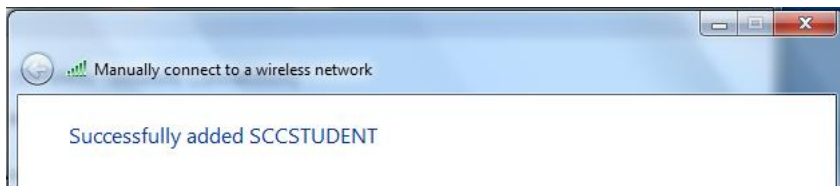


The NETWORK NAME must be spelled exactly like the SSID you want to connect to.

(SCCSTUDENT or SCCSTUDENT5G or StaffBYOD)

Click Next

A new window will open informing you that you have successfully added the SSIDcure Access. Click Change connection settings



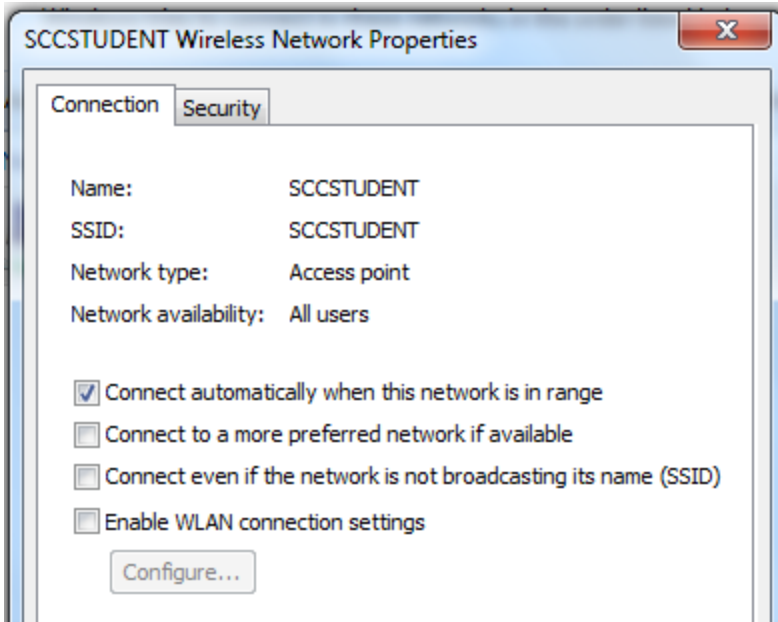
Click CLOSE

You will now see the Manage Wireless Networks window.

RIGHT Click on the Network you just created.

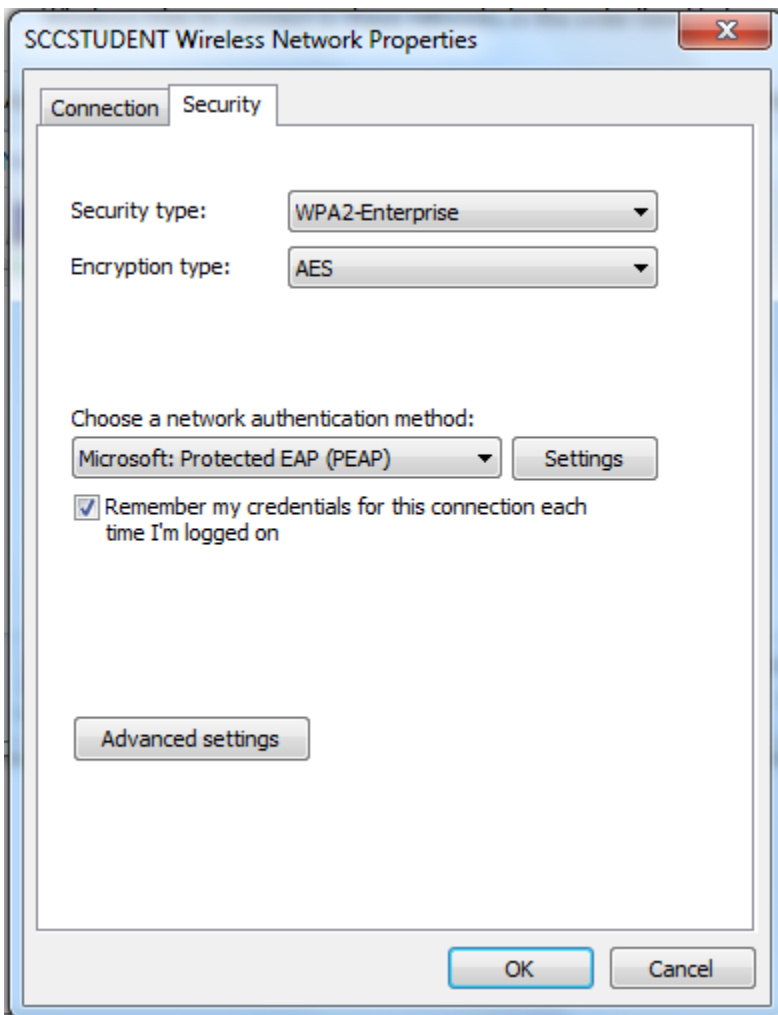
Click Properties

This opens the properties windows.



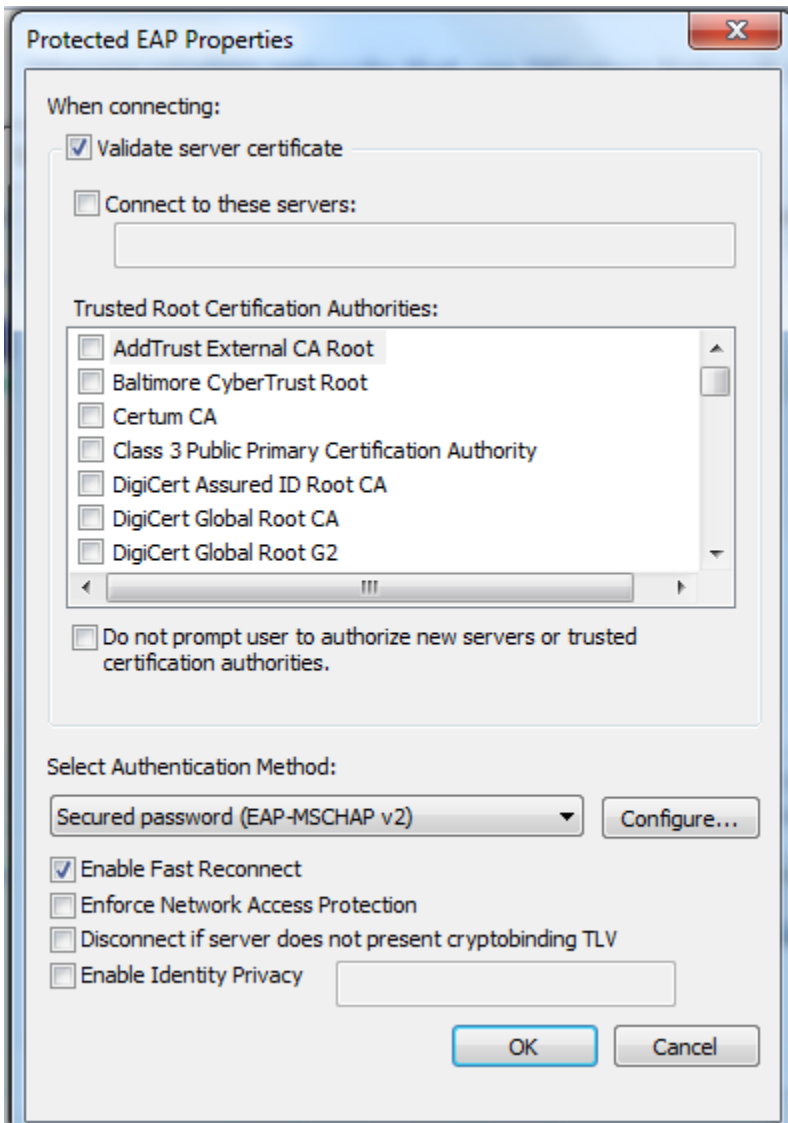
Select the Security TAB

Ensure the window is filled in as shown.



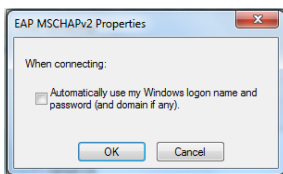
Click the Settings button in the center of the screen

Ensure the windows is filled in as shown below



Click Configure button

Ensure the Automatic Logon is NOT checked



Click OK

Click OK

You should be back to the Properties Security TAB

Click ADVANCED SETTINGS

Click Specify Authentication Mode

Change the setting to USER Authentication

Do NOT click save credentials

Click OK

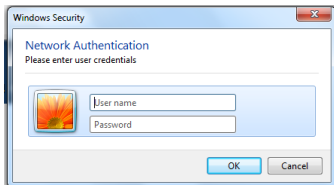
Click OK

You have now Created a Wireless Profile for the SSID you chose (This is only done once)

Close the Manage Wireless Networks window.

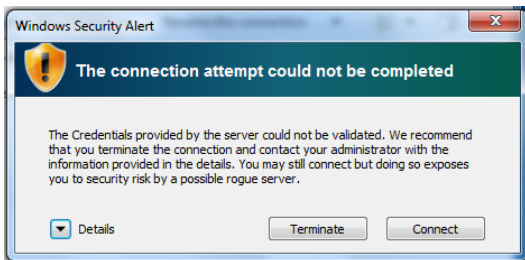
LEFT Click on the Wireless Icon in the taskbar and choose the SSID you just setup the profile for.

Enter your St.Clair ONE username and password.



Click OK

You will receive a warning that the connection could not be completed.



Click CONNECT

You should now have access to the Internet.