



## FEATURED PROJECTS & INITIATIVES

**IT Client:** Audio/Video upgrades are coming to numerous classrooms throughout the South, Chatham and Downtown campuses.

**IT Enterprise:** IT has successfully upgraded our staff LMS (learning management system) to the latest version. This enhancement is part of our ongoing commitment to providing the best possible tools and resources for our staff's professional development.

The new platform offers a sleeker interface, improved performance, and an array of new features designed to enrich the online learning experience.



## MONTHLY FEATURES

### IT CLIENT:

With a new semester comes questions on how to use the MyStClair Portal.

[This orientation document](#) can help answer many of them.

### IT SYSTEMS:

#### Where Do I Find My Schedule?

- Your class schedule can be found in your Student Information System (SIS). To log in please go to the SIS tile at [mySt.Clair portal](#)
- Once you have successfully logged on, click on **Self Service**
- Click on **Enrollment**
- Click on **View My Weekly Schedule**

#### Where Do I Find My Grades?

- Your grades can be found in your Student Information System (SIS). To log in please go to the SIS tile at [mySt.Clair portal](#)

- Once you are logged into your account click the **Enrollment** link
- Once in Enrollment, click **View My Grades** to access your grades.

## **TEAM SPOTLIGHT**



This month, we're focusing on special teams within the **IT Services Department**. To kick this off, we're spotlighting our **HelpDesk Team**.

This dedicated group of individuals is your first line of support when computer problems arise. You've likely talked to one or more of them on the phone or in person! They bring a wealth of knowledge and experience to assist Staff and Students when things don't quite seem to work right.

*Pictured from left to right are Rob S., Sal B., Jason H. & Arianna M.*

---

## **THE CYBERSECURITY CORNER**

What makes a good password? What are some pitfalls when choosing a password? [Find out more.](#)

---

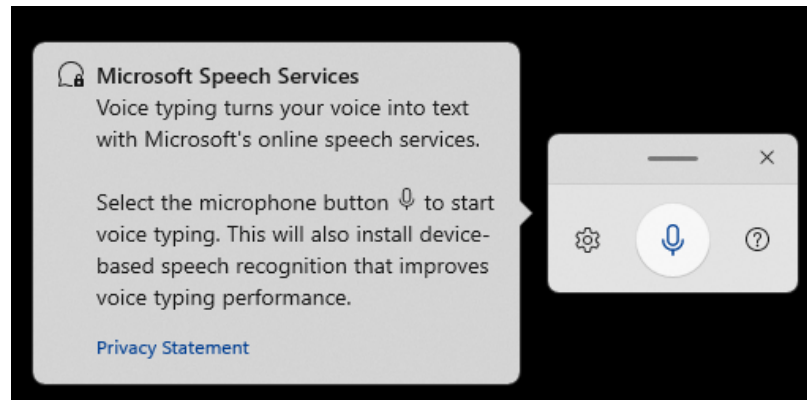
## **GRIFF'S PRO TIP OF THE MONTH**

### **Save your Fingers!**

Pressing the Windows Key + H will open the Microsoft Speech Services tool, which allows you to dictate into your computer.



\*some voice training may be required



---

## THIS MONTH'S CONTEST

We're on the doorstep of our 1 year anniversary, and its time to freshen things up.

For this month's contest, simply tell us something you like about the current newsletters and a suggestion for version two. Just submitting a form entry will enter you into the draw for this month.

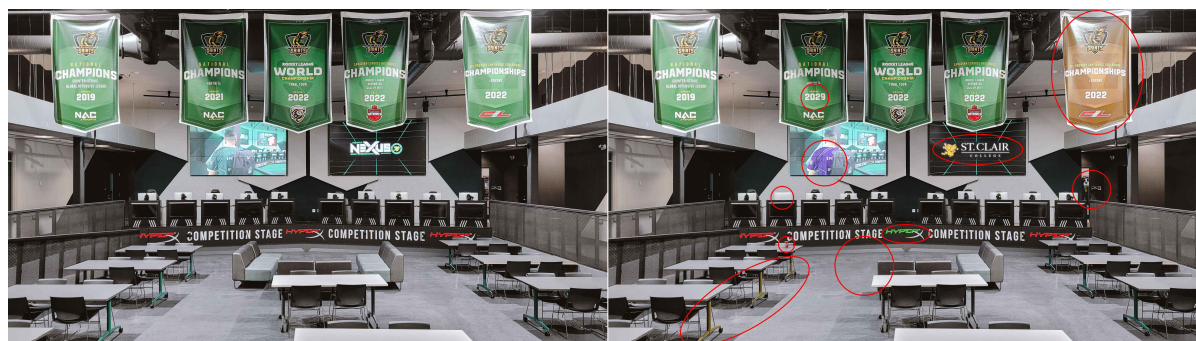
If we use your idea, we'll be having a special draw in September to kick off the new look and fall semester. Stay tuned!

Use this [online form](#) to submit your answer. Three (3) winners will be chosen at random.

[Click here to see contest rules.](#)

---

## LAST MONTH'S CONTEST WINNERS



**Congratulations to our 3 WINNERS from last month's contest!**  
**They were able to find the 10 differences between the pictures.**

The differences were:

1. Tim Horton's cup
2. Missing headset on gaming computer
3. Colour change on HyperX logo
4. Date change on NAC banner
5. Colour change on banner
6. Couch missing
7. Colour change on jersey on the TV
8. Logo change on the TV
9. Colour change on table legs
10. Griff peeking out from the behind the door

**Crystal Elschner**

**Kathleen Boorman**

**Amandeep Kaur**

## **HOURS OF OPERATION:**

### **IT HELPDESK (x2500)**

Mon-Thu: 8am to 8pm  
Fri: 8am to 7:30pm

### **IT CLIENT SERVICES**

Mon-Fri: 8am to 10pm  
September - June  
Mon-Fri: 8am to 5pm  
June-September

### **IT AUDIO/VIDEO**

Mon to Thu: 8am to 8pm  
Fri: 8am to 7:30pm

Something you'd like to see in future issues?

[Drop Us a Line](#)

I agree to receive electronic messages from St. Clair College containing information and offers with respect to activities and services that may be of interest to me. I may withdraw this consent at any time by [unsubscribing](#).